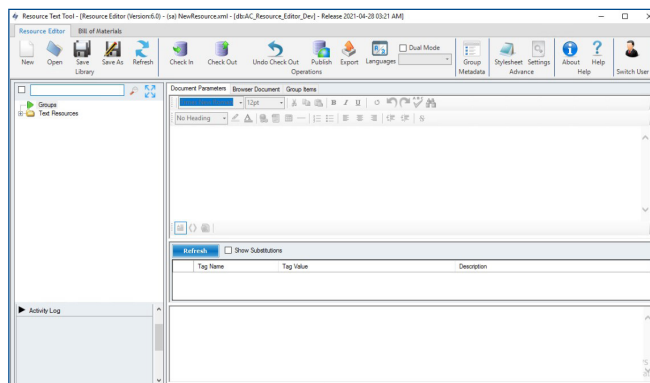


# Syncade Resource Editor

- Simplifies management of recipe instruction text
- Facilitates rapid response to changing production requirements
- Enhanced and interactive instruction display



*Use standard word processing features to document parameters.*

## Introduction

The Syncade Resource Editor allows you to access and interact with recipe instruction text and workflows within a simplified interface. The tool is suitable for operations and quality personnel and recipe authors.

Recipe text management can now be performed outside of workflow, reducing the number of recipe updates needed to address changing production requirements.

The Resource Editor tool allows you to standardize display characteristics, easily manage changes, and group instruction items together. Additionally, the Bill of Materials tab allows you to create, edit, and publish the BOM in Syncade's Document Control and Archiving module.

The Syncade Resource Editor is compatible with both v4 and v6 installations of the Syncade software.

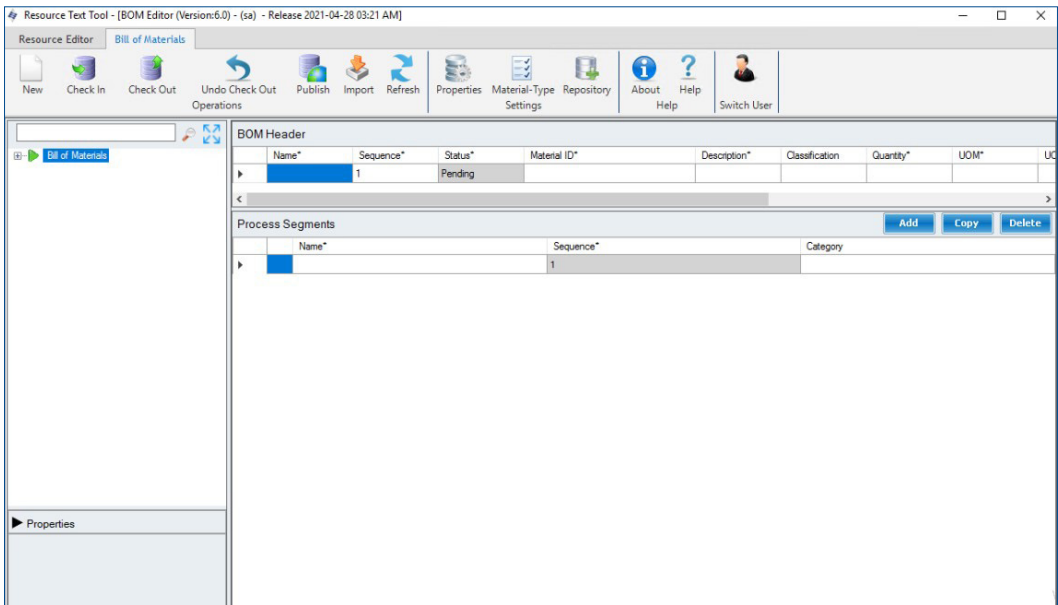
## Efficient Library Management

The Resource Editor tool allows you to conveniently manage your library of work instructions. Standardized display characteristics using word processing features are included within the interface to allow for a more user-friendly experience. These features include highlight text, change color, create table, adjust font size, and duplicate. Resources can be created, revised, and version controlled from within the editor. They can also be grouped based on site requirements and can store metadata. The efficient creation and reuse of instruction text within a specific resource can accelerate recipe creation.

Operational Flexibility

With the Resource Editor tool, it is easy to accommodate site specific variances when transferring and updating recipes. Language differences can now be addressed without having to alter the main recipe. Using the dual display mode,

both the default language and a second language can be rendered simultaneously for a single resource. The tool also enables exporting the resources and groups from the Resource Editor database to migrate or transfer to another system.



Easily create and manage your Bill of Materials.

Contact Us  
www.emerson.com/contactus

©2021, Emerson. All rights reserved.

The Emerson logo is a trademark and service mark of Emerson Electric Co. All other marks are the property of their respective owners.

The contents of this publication are presented for informational purposes only, and while diligent efforts were made to ensure their accuracy, they are not to be construed as warranties or guarantees, express or implied, regarding the products or services described herein or their use or applicability. All sales are governed by our terms and conditions, which are available on request. We reserve the right to modify or improve the designs or specifications of our products at any time without notice.

