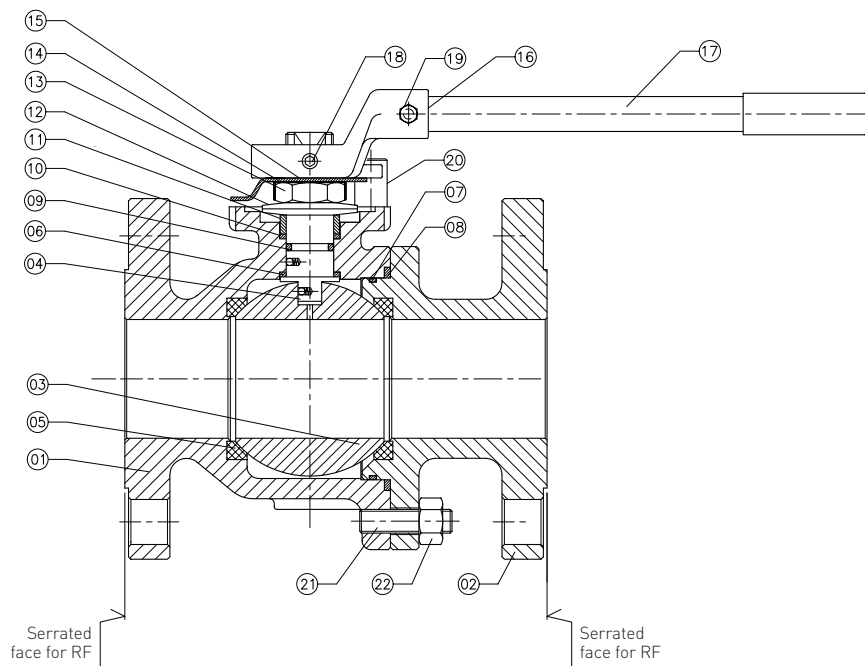
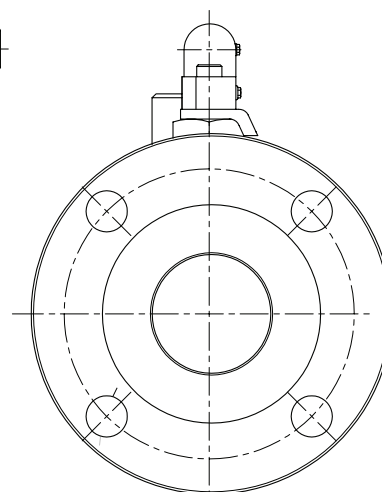


KTM VIRGO SERIES S FLOATING BALL VALVES

S SERIES S2 DESIGN - MATERIAL MATRIX

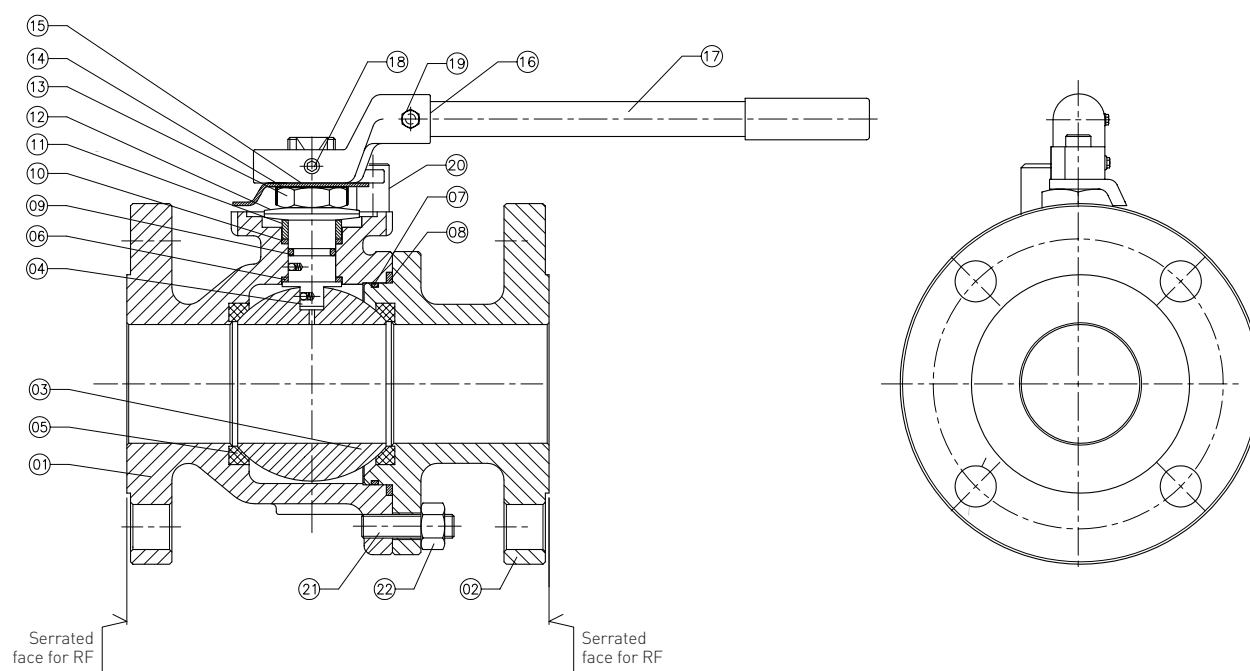


MATERIAL COMBINATION OF VALVE

Item no.	Part name	C6G	66G	26G
		Body-WCB, Trim-SS Seat - modified PTFE / RTFE	Body-CF8M, Trim-SS Seat - modified PTFE / RTFE	Body-LCC, Trim-SS Seat - modified PTFE / RTFE
1	Body	ASTM A216 GR. WCB	ASTM A351 GR. CF8M	ASTM A352 GR. LCC
2	Adapter	ASTM A216 GR. WCB	ASTM A351 GR. CF8M	ASTM A352 GR. LCC
3	Ball	ASTM A182 GR. F316	ASTM A182 GR. F316	ASTM A182 GR. F316
4	Stem	ASTM A479 TYPE 316	ASTM A479 TYPE 316	ASTM A479 TYPE 316
5	Seat	Modified PTFE / RTFE	Modified PTFE / RTFE	Modified PTFE / RTFE
6	Thrust washer	RPTFE	RPTFE	RPTFE
7	O-ring (body seal)	Viton-B	Viton-B	Viton-B
8	Gasket (body seal)	Graphite	Graphite	Graphite
9	O-ring (stem seal)	Viton-B	Viton-B	Viton-B
10	Gasket (stem seal)	Graphite	Graphite	Graphite

KTM VIRGO SERIES S FLOATING BALL VALVES

S SERIES S2 DESIGN - MATERIAL MATRIX

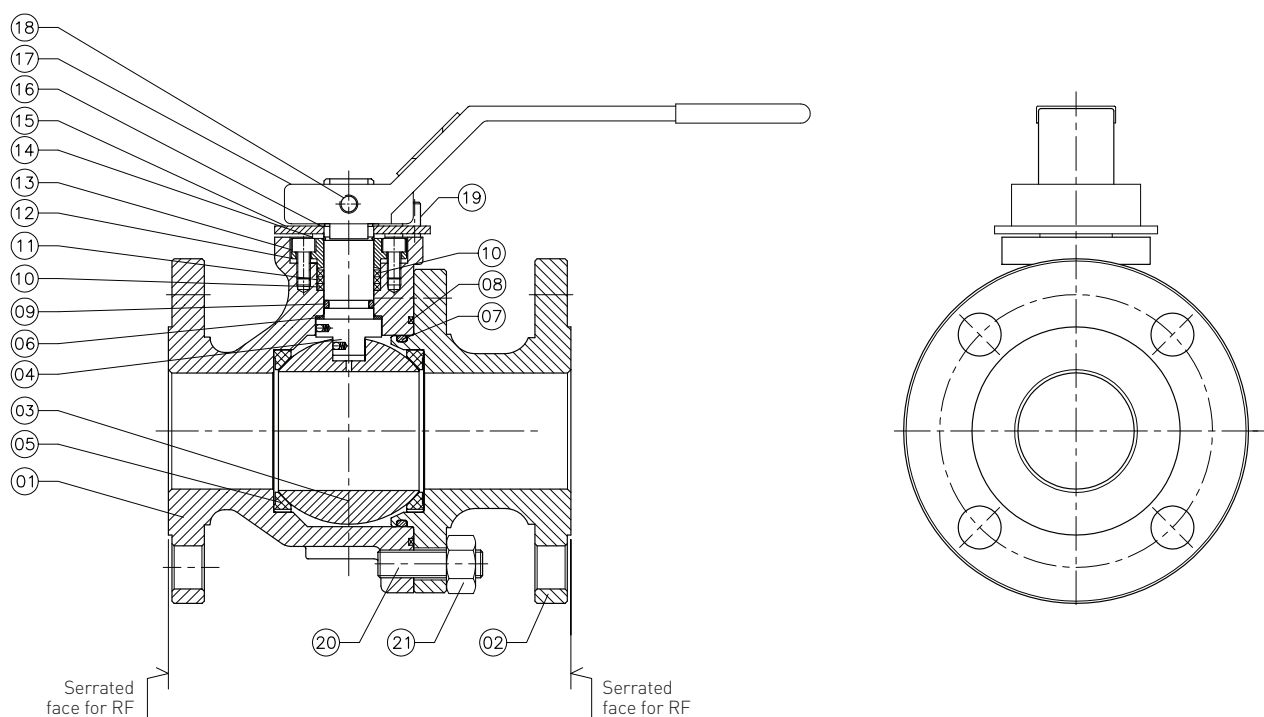


MATERIAL COMBINATION OF VALVE (CONTINUED)

Item no.	Part name	C6G	66G	26G
		Body-WCB, Trim-SS Seat - modified PTFE / RTFE	Body-CF8M, Trim-SS Seat - modified PTFE / RTFE	Body-LCC, Trim-SS Seat - modified PTFE / RTFE
11	Gland spacer	ASTM A479 type 316	ASTM A479 type 316	ASTM A479 type 316
12	Cup spring	DIN 10089 GR.51CrV4	ASTM A479 type 304 / SS316	ASTM A479 type 304 / SS316
13	Stem nut	ASTM A194 GR. 8M	ASTM A194 GR. 8M	ASTM A194 GR. 8M
14	Stem nut lock plate	ASTM A666 AISI 301	ASTM A666 AISI 301	ASTM A666 AISI 301
15	Lock plate	Carbon steel	Carbon steel	Carbon steel
16	Handle coupler	ASTM A216 GR. WCB	ASTM A216 GR. WCB	ASTM A216 GR. WCB
17	Pipe	Carbon steel	Carbon steel	Carbon steel
18	Grub screw	IS 1367 HTS GR. 12.9	IS 1367 HTS GR. 12.9 / ISO 3506-1 A2-70	IS 1367 HTS GR. 12.9 / ISO 3506-1 A2-70
19	HEX bolt	IS 1367 GR. 8.8	IS 1367 GR. 8.8 / ISO 3506-1 A2-70	IS 1367 GR. 8.8 / ISO 3506-1 A2-70
20	Stop pin	AISI 1040	ASTM A479 type 316	ASTM A479 type 316
21	Stud	ASTM A193 GR. B7M	ASTM A193 GR. B8M	ASTM A320 GR. L7M
22	Nut	ASTM A194 GR. 2HM	ASTM A194 GR. 8M	ASTM A194 GR. 7M

KTM VIRGO SERIES S FLOATING BALL VALVES

S SERIES SA2 DESIGN - MATERIAL MATRIX

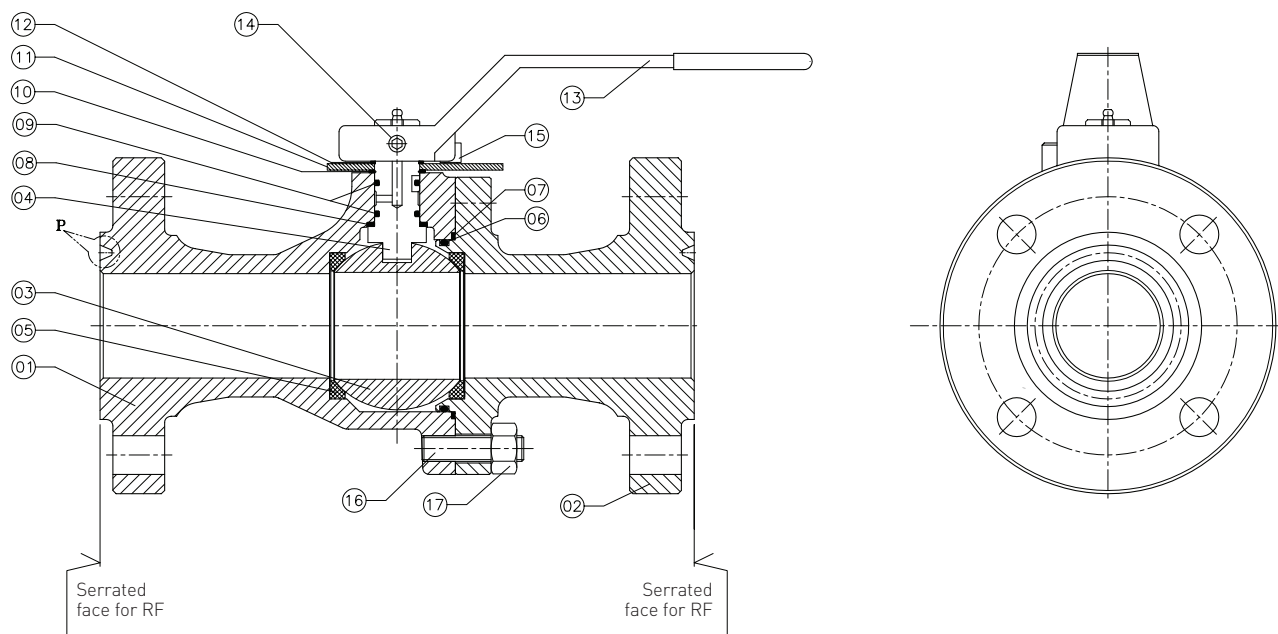


MATERIAL COMBINATION OF VALVE

Item no.	Part name	C6G Body-WCB, Trim-SS Seat - modified PTFE / RTFE	66G Body-CF8M, Trim-SS Seat - modified PTFE / RTFE	26G BODY-LCC, TRIM-SS Seat - modified PTFE / RTFE
1	Body	ASTM A216 GR. WCB	ASTM A351 GR. CF8M	ASTM A352 GR. LCC
2	Adapter	ASTM A216 GR. WCB	ASTM A351 GR. CF8M	ASTM A352 GR. LCC
3	Ball	ASTM A182 GR. F316	ASTM A182 GR. F316	ASTM A182 GR. F316
4	Stem	ASTM A479 type 316	ASTM A479 type 316	ASTM A479 type 316
5	Seat	Modified PTFE / RTFE	Modified PTFE / RTFE	Modified PTFE / RTFE
6	Thrust washer	RPTFE	RPTFE	RPTFE
7	O-ring (body seal)	Viton-B	Viton-B	Viton-B
8	Gasket (body seal)	Graphite	Graphite	Graphite
9	O-ring (stem seal)	Viton-B	Viton-B	Viton-B
10	Gasket (stem seal)	Graphite (braided rope)	Graphite (braided rope)	Graphite (braided rope)
11	Gasket (stem seal)	Graphite (die molding ring)	Graphite (die molding ring)	Graphite (die molding ring)
12	Gland	ASTM A479 type 316	ASTM A479 type 316	ASTM A479 type 316
13	Gland bolting	IS 1367 HTS GR. 12.9	ISO 3506-1 A2-70	ISO 3506-1 A2-70
14	Spacer	Nylon	Nylon	Nylon
15	Lock plate	Carbon steel	Carbon steel	Carbon steel
16	Circlip	Carbon steel	Carbon steel	Carbon steel
17	Handle coupler	ASTM A536 GR. 65-45-12	ASTM A536 GR. 65-45-12	ASTM A536 GR.65-45-12
18	HEX bolt / grub screw	IS 1367 HTS GR. 10.9	IS 1367 HTS GR.10.9 / ISO 3506-1 A2-70	IS 1367 HTS GR. 10.9 / ISO 3506-1 A2-70
19	Stop pin	DIN 10089 51 Cr V4	DIN 10089 51 Cr V4	DIN 10089 51 Cr V4
20	Stud	ASTM A193 GR. B7M	ASTM A193 GR. B8M	ASTM A320 GR. L7M
21	Nut	ASTM A194 GR. 2HM	ASTM A194 GR. 8M	ASTM A194 GR. 7M

KTM VIRGO SERIES S FLOATING BALL VALVES

S SERIES S2 ALTERNATE DESIGN - MATERIAL MATRIX



MATERIAL COMBINATION OF VALVE

Item no.	Part name	C6L Body-WCB, Trim-SS Seat - Devlon	66L Body-CF8M, Trim-SS Seat - Devlon	26L Body-LCC, Trim-SS Seat - Devlon
		Body-WCB, Trim-SS Seat - Devlon	Body-CF8M, Trim-SS Seat - Devlon	Body-LCC, Trim-SS Seat - Devlon
1	Body	ASTM A216 GR. WCB	ASTM A351 GR. CF8M	ASTM A352 GR. LCC
2	Adapter	ASTM A216 GR. WCB	ASTM A351 GR. CF8M	ASTM A352 GR. LCC
3	Ball	ASTM A182 GR. F316	ASTM A182 GR. F316	ASTM A182 GR. F316
4	Stem	ASTM A479 TYPE 316	ASTM A479 TYPE 316	ASTM A479 TYPE 316
5	Seat	Devlon	Devlon	Devlon
6	O-ring (body seal)	HNBR	HNBR	HNBR
7	Gasket (body seal)	Graphite	Graphite	Graphite
8	Thrust washer	RPTFE	RPTFE	RPTFE
9	O-ring (stem seal)	HNBR	HNBR	HNBR
10	Spacer	Nylon	Nylon	Nylon
11	Lock and stop plate	Carbon steel	Carbon steel	Carbon steel
12	Circlip	Carbon steel	Carbon steel	Carbon steel
13	Handle coupler	ASTM A536 GR. 65-45-12	ASTM A536 GR. 65-45-12	ASTM A536 GR. 65-45-12
14	Grub screw	IS 1367 HTS GR. 12.9	IS 1367 HTS GR.12.9 / ISO 3506-1 A2-70	IS 1367 HTS GR.12.9 / ISO 3506-1 A2-70
15	Stop pin	AISI 1040	ASTM A479 TYPE 316	ASTM A479 TYPE 316
16	Stud	ASTM A193 GR. B7M	ASTM A193 GR. B8M	ASTM A320 GR. L7M
17	Nut	ASTM A194 GR. 2HM	ASTM A194 GR. 8M	ASTM A194 GR. 7M

Emerson Automation Solutions

10707 Clay Road
Houston, TX 77041, USA
Phone: +1 713-986-4665

Emerson Automation Solutions

277, Hinjewadi Phase II, Maan (Mulshi)
Pune - 411 057, India
Phone: +91 20 6674 4000
Fax: +91 20 6674 4021

Emerson Automation Solutions

Via Castellanza, 47, 20027 Rescaldina Milan, Italy
Phone: +39 331 575200

Emerson Automation Solutions

PO Box 18748
Bldg B Jebel Ali Free Zone,
South Zone 2, Dubai, UAE
Phone: +971 4 8118100
Fax: +971 4 8865465

Emerson Automation Solutions

1 Pandan Crescent
Singapore 128461
Phone: +65 6777 8211

Emerson Automation Solutions

1803, YongSeong Biztel, 314-1
Hangganro 2ga, Yongsan-gu
Seoul, South Korea, 140-750
Phone: +82 70 8884 0630

Emerson Automation Solutions

Room No. C 38, 11th Floor,
Shanghai Mart, 2299 Yan An Rd (W),
Shanghai, China
Phone: +86 21 6207 6626

Neither Emerson, Emerson Automation Solutions, nor any of their affiliated entities assumes responsibility for the selection, use or maintenance of any product. Responsibility for proper selection, use, and maintenance of any product remains solely with the purchaser and end user.

KTM and Virgo are marks owned by one of the companies in the Emerson Automation Solutions business unit of Emerson Electric Co. Emerson Automation Solutions, Emerson and the Emerson logo are trademarks and service marks of Emerson Electric Co. All other marks are the property of their respective owners.

The contents of this publication are presented for informational purposes only, and while every effort has been made to ensure their accuracy, they are not to be construed as warranties or guarantees, express or implied, regarding the products or services described herein or their use or applicability. All sales are governed by our terms and conditions, which are available upon request. We reserve the right to modify or improve the designs or specifications of such products at any time without notice.

Emerson.com/FinalControl