

# Recipe Studio

The screenshot displays the Recipe Studio interface for a recipe named [Recipes/Procedures/DEMO\_LOCK\_PARAM]. The interface includes a menu bar (Home, Diagram, View), a toolbar with various icons, and a main workspace. On the left, a tree view shows the recipe structure, including steps like BEGIN\_PRC, COMPLETE, and various feed and fill operations. The main workspace shows a graphical flowchart with a START node, a junction, three parallel feed steps (UP\_FILL\_FEED\_TK:1, UP\_FILL\_FEED\_TK:2, UP\_FILL\_FEED\_TK:3), another junction, and a final FILL\_CMPLT node. On the right, a panel titled 'All PFC Items' lists Sequence, Step, Termination, and Transition. At the bottom, a table lists parameters and their values.

Parameter	Description	HIGH MATERIA...	HIGH MATERIA...	HIGH MATERIA...	STANDARD
AGITATE_TIME	Agitation Time	15	15	30	15
MAT1_AMOU...	Amount of Feed ...	144	50	144	50
MAT2_AMOU...	Amount of Feed ...	20	100	100	50
MAT3_AMOU...	Amount of Feed ...	20	14	18	20
OPER_PROMPTS	Issue Pr...	<0>	<0>	<0>	<0>
SYNCADE	Indicate...	<False>	<False>	<False>	<False>
TK1_LEVEL	Feed Ta...	<700>	450	<700>	250
TK2_LEVEL	Feed Ta...	450	<700>	<700>	250
TK3_LEVEL	Feed Ta...	450	450	450	250
WTR_AMOUNT	Amount	100	100	100	100

Batch configuration using industry standard control language and controls with Recipe Studio.

- Builds your recipes graphically
- ISA-88.01 and IEC 61131-3 Design Foundation
- Single, system-integrated configuration database

## Introduction

Are you ready to configure your batch your way? Eliminate complicated configuration applications that limit your batch processing capability. Replace those applications with a single system designed to easily configure your recipes.

Recipe Studio gives you powerful tools to create, modify, and troubleshoot your recipes. The graphical configuration tools in the DeltaV™ system simplify the overall engineering effort and reduce the development and testing time required.

Even users without computer programming expertise can construct batch control strategies quickly and easily without extensive product training.

## Benefits

**Build your recipes graphically.** Recipe Studio allows you to create and maintain flexible and reusable recipes. Developing your recipes is a quick and easy task, *you point and click* on the tools to build the recipe in a graphical display.

**ISA-88.01 and IEC 61131-3 Design Foundation.** DeltaV batch is built on *current industry standards*. Procedural control models, as well as terminology used throughout the system are based on the *ISA-88.01* batch manufacturing standard. Procedures, unit procedures, and operations are constructed graphically using *IEC 61131-3* compliant Sequential Function Charts (SFCs).

**Single integrated configuration database.** A *single, object-oriented* database eliminates the need for managing and synchronizing configuration data across multiple configuration databases.

## Product Description

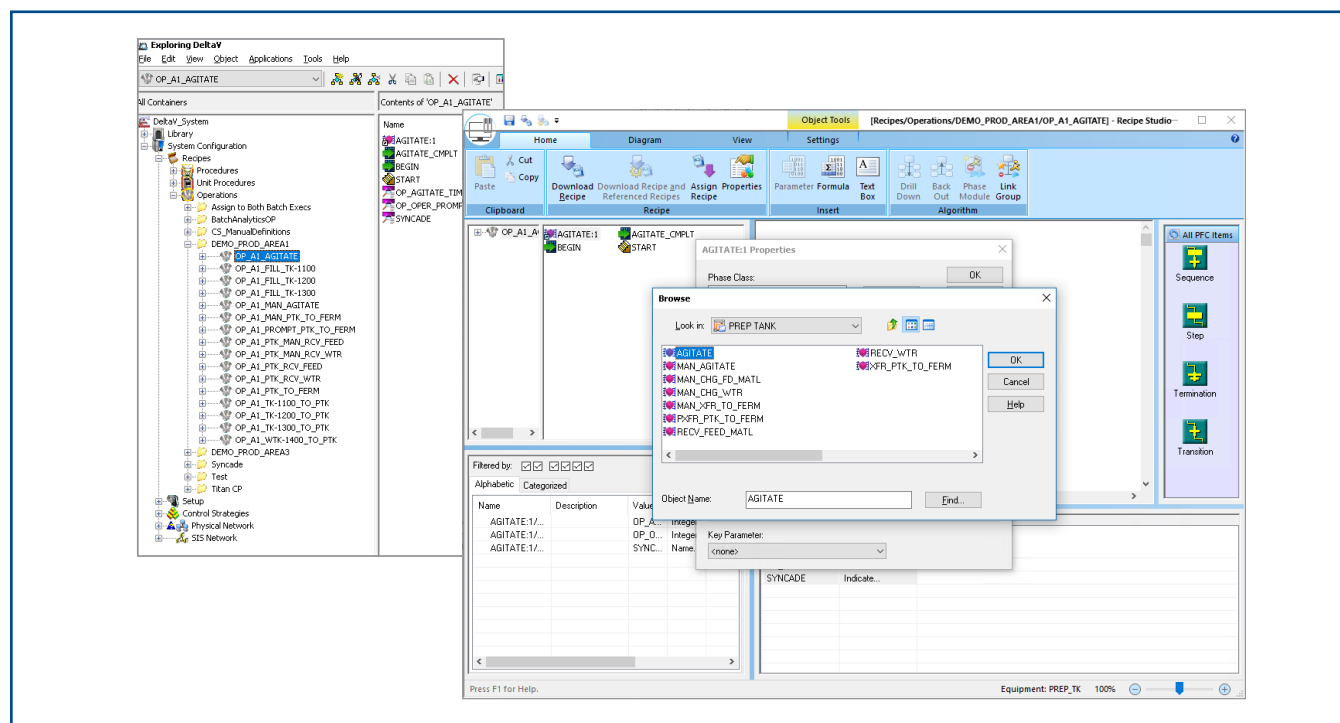
In Recipe Studio, you define recipe configurations (procedures, unit procedures, and operations) in an offline environment.

The DeltaV *built-for-batch* architecture provides an integrated batch engineering environment.

Procedural elements are configured with similar tools and techniques used to construct basic level process control strategies. Drag-and-drop, point-and-click, and simple browsing tools help you easily maneuver in the recipe application. Hierarchical and object attribute views offer additional information to the user and bring more power to the engineer while making configuration easier.

Recipe Studio is an object-oriented technology. All items in an SFC are *context-sensitive*. Link a step within a unit procedure to an operation with a simple right-click of the mouse. Object help, properties, and other editing tools are also accessible here. Recipe Studio allows a user to design an unlimited number of procedures, unit procedures, and operations.

Whether running on a ProfessionalPLUS Station, Professional Station, Operator Station or Base Station, Recipe Studio accesses the single configuration database used by the entire DeltaV system. With this client-server architecture, multiple Recipe Studio applications may be opened simultaneously in a single system.



Open, edit, drag and drop, browse, and integrate all your recipe elements.

## Ordering Information

Description	Model Number
Recipe Studio	VE2164

\* Recipe Studio is included in the ProfessionalPLUS Station, Professional Station, and DeltaV Engineering Seat Software Suite(s). However, to execute recipes created with Recipe Studio, the prerequisites shown below must be satisfied.

\*\* When the Recipe Studio license is assigned to an Operator or Base Station node type (or Remote Client Session), the Configuration Software Suite license (VE2162) must also be assigned in order to modify recipe configurations (including saving recipe changes).

## Related Products

- **Advanced Unit Management Software.** Provides class-based Unit Modules and aliasing to make developing unit-relative equipment strategies simple.
- **Batch Executive.** The batch engine which coordinates all batch processing activity, creates detailed batch history records and schedules recipes and resources.
- **Configuration Audit Trail.** A powerful tool that tracks changes and manages revision information for any item in the DeltaV configuration database, including Safety Instrumented System (SIS) items.
- **Configuration Software Suite.** Makes it easy to create Control Strategies and System Graphics to get your plant up and running quickly and efficiently.
- **DeltaV Operate.** High performance operator graphics, trends and alarms offered in standard operating layouts and utilizing system-wide built-in security.
- **DeltaV Operate for Batch.** Batch Controls allow you to operate your batches from the same DeltaV Operate environment used to monitor and control your process.

- **Monitor and Control Software.** Provides a single user interface with industry standard control languages and functions for graphical control strategy development, testing, and deployment.
- **Recipe Exchange.** Provides an open, programmatic interface to the DeltaV recipe management system. Recipe Exchange is based on an XML schema that provides the ability to programmatically import and export DeltaV recipes. A Service-Oriented Architecture Web Service is also available for Recipe Exchange.
- **Synccade™ Smart Operations Management Suite.** A new class of real-time production management software, provides an easy, flexible, integrated solution that increases plant performance by efficiently managing plant materials and equipment, coordinating production operations, improving quality operations and integrating plant information.

## Prerequisites

- DeltaV M-Series or S-Series controller(s) with Advanced Unit Management software license. Refer to the Advanced Unit Management product data sheet for details.
- DeltaV Batch Executive. Refer to the Batch Executive product data sheet for details.

### Emerson

#### North America, Latin America:

☎ +1 800 833 8314 or  
☎ +1 512 832 3774

#### Asia Pacific:

☎ +65 6777 8211

#### Europe, Middle East:

☎ +41 41 768 6111

🌐 [www.emerson.com/deltav](http://www.emerson.com/deltav)

©2019, Emerson. All rights reserved.

The Emerson logo is a trademark and service mark of Emerson Electric Co. The DeltaV logo is a mark of one of the Emerson family of companies. All other marks are the property of their respective owners.

The contents of this publication are presented for informational purposes only, and while diligent efforts were made to ensure their accuracy, they are not to be construed as warranties or guarantees, express or implied, regarding the products or services described herein or their use or applicability. All sales are governed by our terms and conditions, which are available on request. We reserve the right to modify or improve the designs or specifications of our products at any time without notice.