

## Data sheet

Sheet No.: C3PI 3.01 Rev. B

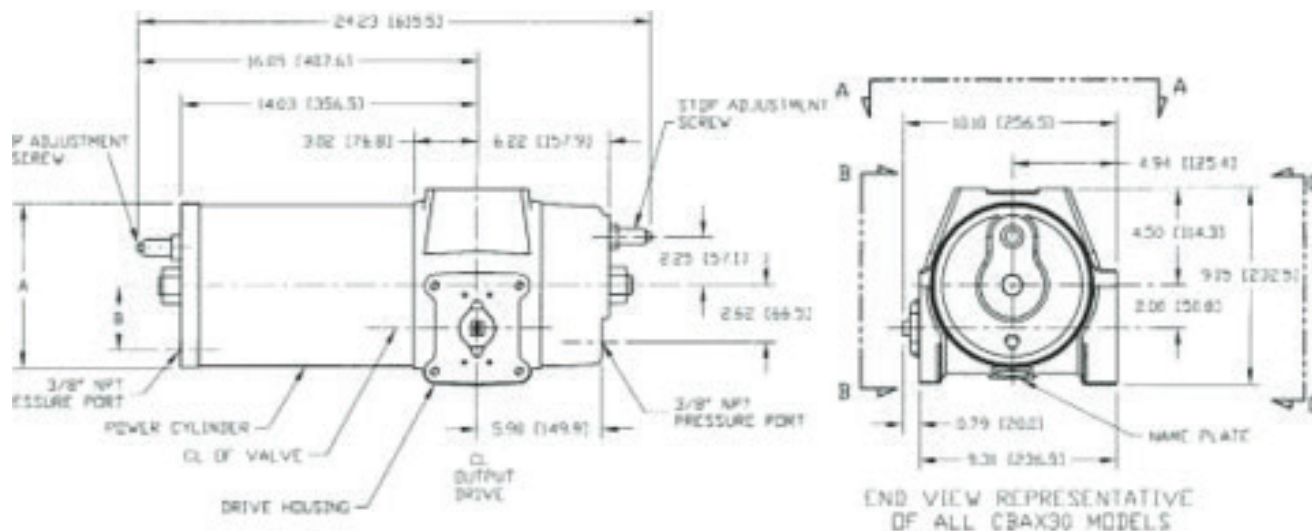
Date: August 2010

CBA-300 Series

# Dimensions – (Pneumatic) In.

## Double-Acting Actuators

### CBAX30



ACTUATORS SHOWN ROTATED TO FULL CLOCKWISE POSITION

Actuator Model	A	B
CBA 730	7.63	3.00
CBA 830	8.63	3.50
CBA 930	9.63	4.00
CBA 1030	10.88	4.50

Note: Not Certified dimensional drawings. Such drawings available on request.  
Contact factory with correct model designation and serial number.  
All dimensions are expressed in inches.

**BETTIS™**



**EMERSON™**

Copyright © Emerson. The information in this document is subject to change without notice. Updated data sheets can be obtained from our website [www.emerson.com/eim](http://www.emerson.com/eim) or from your Emerson Automation Solutions - Actuation Technologies Center:  
America's: +1 281 477 4100 Europe: +36 22 53 0950 Asia/Pacific: +65 67 77 8211

## Data sheet

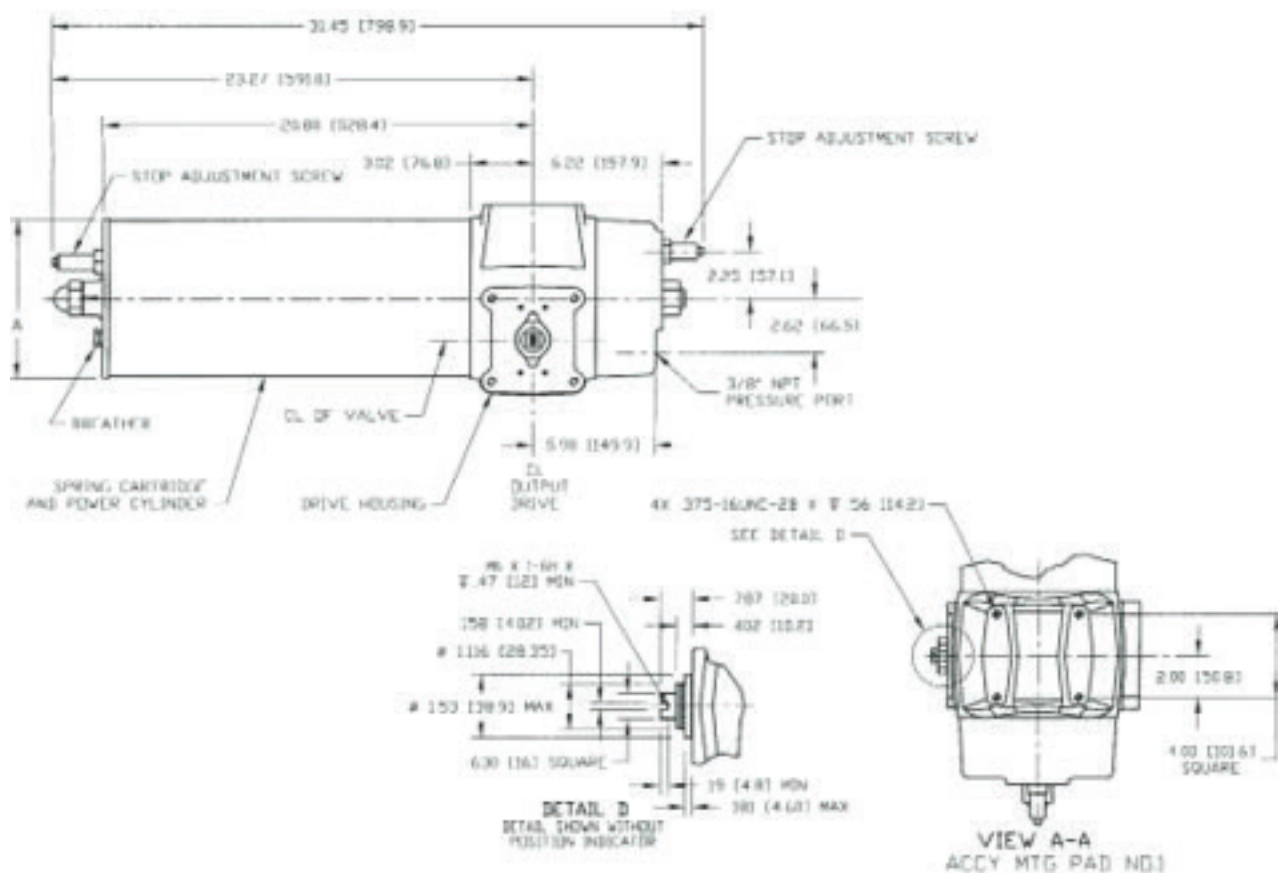
Sheet No.: C3PI 3.02 Rev. B

Date: August 2010

CBA-300 Series

# Dimensions – (Pneumatic) In.

## Spring-Return Actuators CBAX30-SRX



ACTUATORS SHOWN ROTATED TO FULL CLOCKWISE POSITION

Actuator Model	A
CBA 730 -SRX	7.69
CBA 830 -SRX	8.69
CBA 930 -SRX	9.69
CBA 1030-SRX	11.00

Note: Not Certified dimensional drawings. Such drawings available on request.  
Contact factory with correct model designation and serial number.  
All dimensions are expressed in inches.

**BETTIS™**

**EMERSON™**

Copyright © Emerson. The information in this document is subject to change without notice. Updated data sheets can be obtained from our website [www.emerson.com/eim](http://www.emerson.com/eim) or from your Emerson Automation Solutions - Actuation Technologies Center:  
America's: +1 281 477 4100 Europe: +36 22 53 0950 Asia/Pacific: +65 67 77 8211

## Data sheet

Sheet No.: C3PI 3.03 Rev. B

Date: August 2010

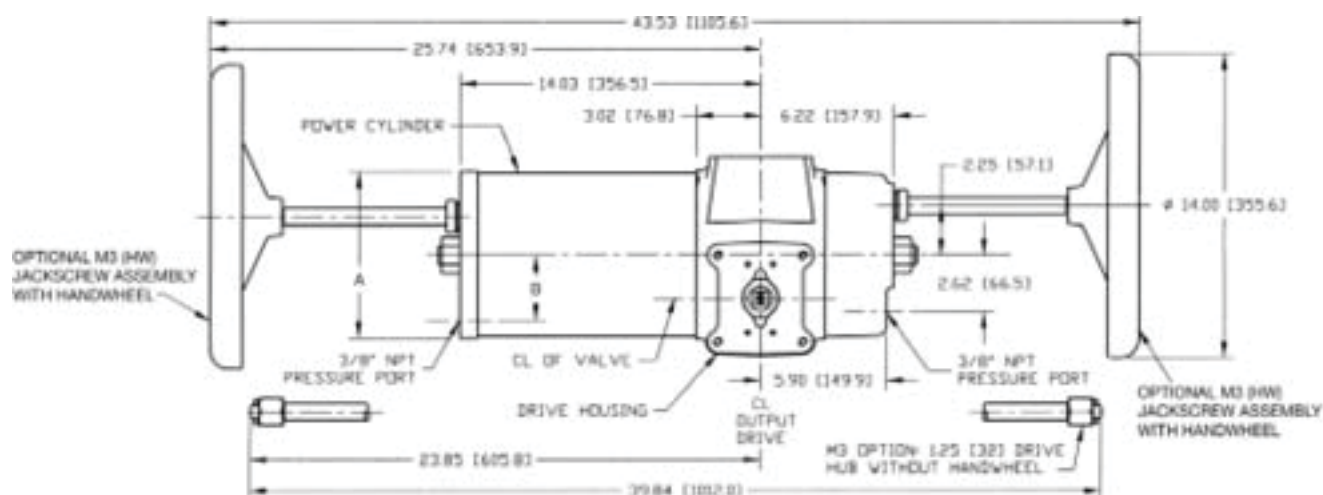
CBA-300 Series

# Dimensions – (Pneumatic) In.

## M3(HW) Override

### Double-Acting Actuators

#### CBAX30-M3(HW)



Actuator Model	A	B
CBA 730-M3HW	7.63	3.00
CBA 830-M3HW	8.63	3.50
CBA 930-M3HW	9.63	4.00
CBA 1030-M3HW	10.88	4.50

Note: Not Certified dimensional drawings. Such drawings available on request.  
Contact factory with correct model designation and serial number.  
All dimensions are expressed in inches.

**BETTIS**<sup>™</sup>



**EMERSON**<sup>™</sup>

Copyright © Emerson. The information in this document is subject to change without notice. Updated data sheets can be obtained from our website [www.emerson.com/eim](http://www.emerson.com/eim) or from your Emerson Automation Solutions - Actuation Technologies Center:  
America's: +1 281 477 4100 Europe: +36 22 53 0950 Asia/Pacific: +65 67 77 8211

## Data sheet

Sheet No.: C3PI 3.04 Rev. B

Date: August 2010

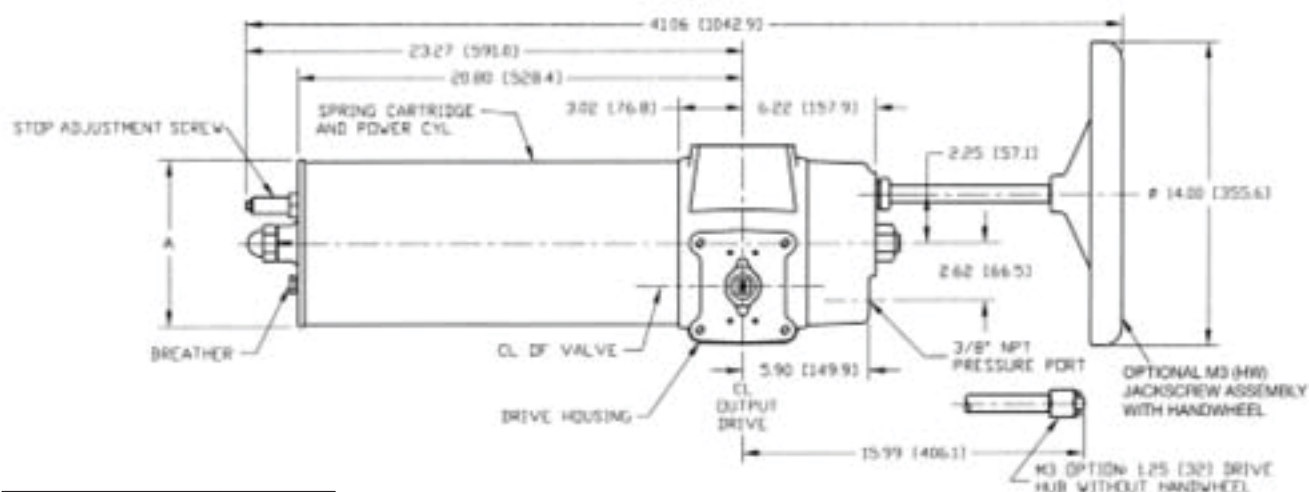
CBA-300 Series

# Dimensions – (Pneumatic) In.

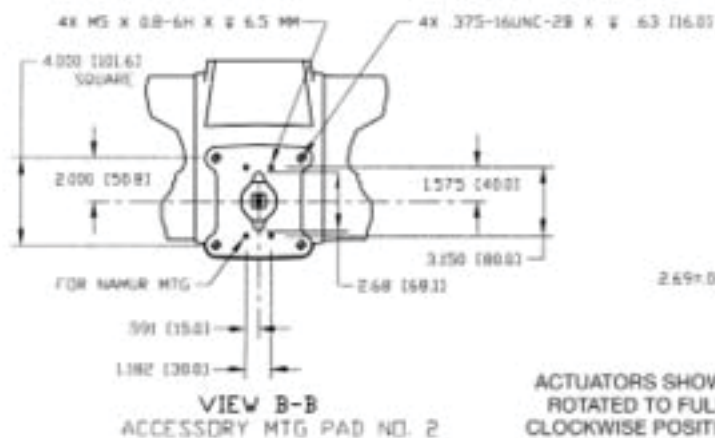
## M3(HW) Override

### Spring-Return Actuators

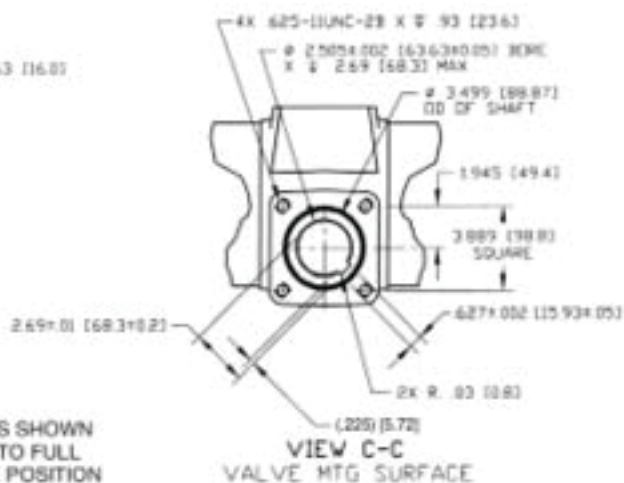
#### CBAX30-SRX-M3(HW)



Actuator Model	A
CBA 730-SRX-M3HW	7.69
CBA 830-SRX-M3HW	8.69
CBA 930-SRX-M3HW	9.69
CBA 1030-SRX-M3HW	11.00



ACTUATORS SHOWN  
ROTATED TO FULL  
CLOCKWISE POSITION



Note: Not Certified dimensional drawings. Such drawings available on request.

Contact factory with correct model designation and serial number.

All dimensions are expressed in inches.

**BETTIS™**



**EMERSON™**

Copyright © Emerson. The information in this document is subject to change without notice. Updated data sheets can be obtained from our website

www.emerson.com/eim or from your Emerson Automation Solutions - Actuation Technologies Center:

America's: +1 281 477 4100 Europe: +36 22 53 0950 Asia/Pacific: +65 67 77 8211

## Data sheet

Sheet No.: C3PI 3.05 Rev. B

Date: August 2010

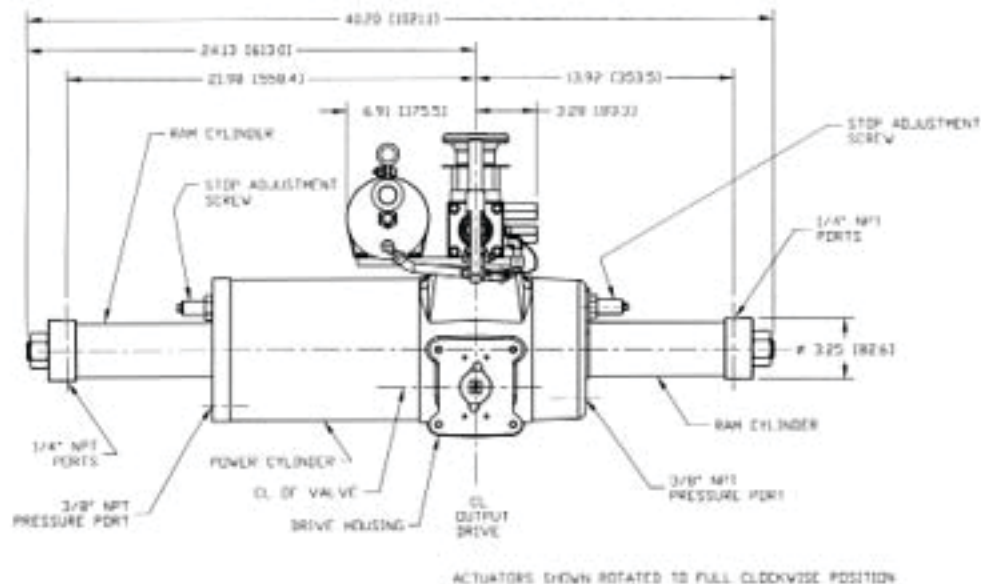
CBA-300 Series

# Dimensions – (Pneumatic) In.

## M11 Override

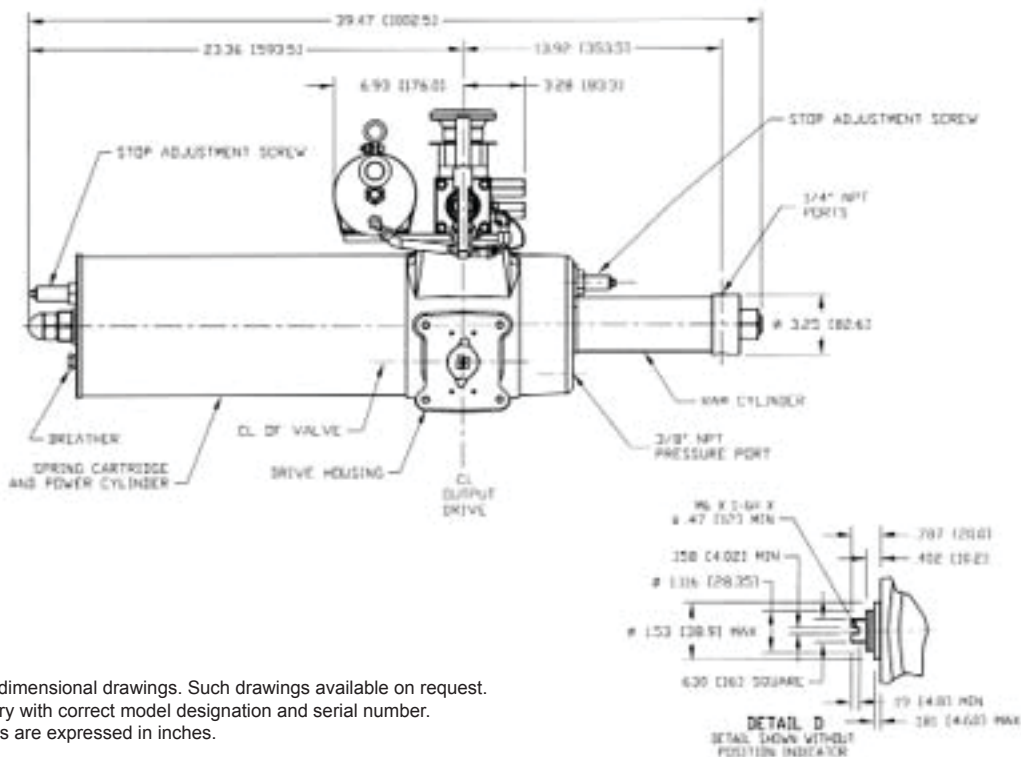
### Double-Acting Actuators

#### CBAX30-M11



## Spring-Return Actuators

### CBAX30-SRX-M11



Note: Not Certified dimensional drawings. Such drawings available on request.  
Contact factory with correct model designation and serial number.  
All dimensions are expressed in inches.

**BETTIS™**

**EMERSON™**

Copyright © Emerson. The information in this document is subject to change without notice. Updated data sheets can be obtained from our website [www.emerson.com/eim](http://www.emerson.com/eim) or from your Emerson Automation Solutions - Actuation Technologies Center:  
America's: +1 281 477 4100 Europe: +36 22 53 0950 Asia/Pacific: +65 67 77 8211

## Data sheet

Sheet No.: C3PI 3.06 Rev. B

Date: August 2010

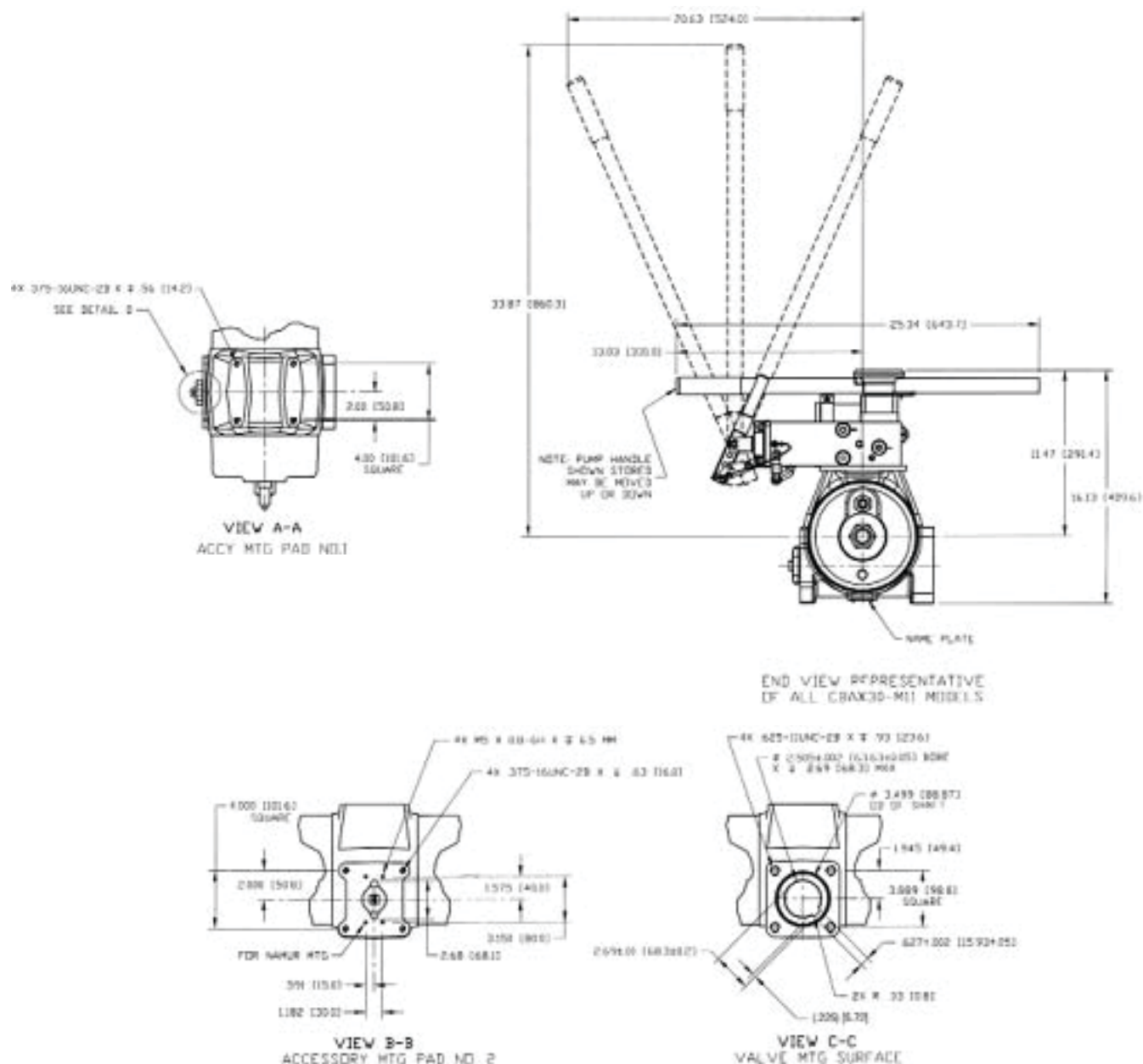
# CBA-300 Series

## Dimensions – (Pneumatic) In.

### M11 Override

#### Spring-Return Actuators

#### CBAX30-SRX-M11



Note: Not Certified dimensional drawings. Such drawings available on request.  
Contact factory with correct model designation and serial number.  
All dimensions are expressed in inches.

## BETTIS™

Copyright © Emerson. The information in this document is subject to change without notice. Updated data sheets can be obtained from our website [www.emerson.com/eim](http://www.emerson.com/eim) or from your Emerson Automation Solutions - Actuation Technologies Center:  
America's: +1 281 477 4100 Europe: +36 22 53 0950 Asia/Pacific: +65 67 77 8211

## EMERSON™